



University of Brasília – UnB

Technology College

Production engineering

Production Systems Project 1

Bruna de Lima Bezerra – 170138411

Isaac Veras Lima – 190014601

Luca Dias Bueno – 190091533

Mobile Education - Partner Integration

Project Opening Term

Summary

1. Objectives.....	3
2. Current status and justification of the project	3
3. SMART objectives and project success criteria.....	3
4. Project Analytical Structure.....	4
5. Project Schedule.....	5
6. Main requirements of the main deliveries/products	5
7. Analysis of potential financial partners	5
8. Milestones	5
9. Stakeholders.....	6
10. Restrictions	6
11. Assumptions	7
12. Risks	8
13. Project Budgets.....	8

1. Objectives

- List potential partners for creating courses;
- List potential long-term financial support partners;
- Report and document the process and results.

2. Current status and justification of the project

After closing the dumps, the garbage collectors have difficulty managing their monthly income; manage their cooperation and find alternatives to obtain their income and effectively exercise their citizenship.

Thus, the main objective of the project is to identify partners with a view to supporting more than 2500 street sweepers who depended on recycling work at the site.

3. SMART objectives and project success criteria

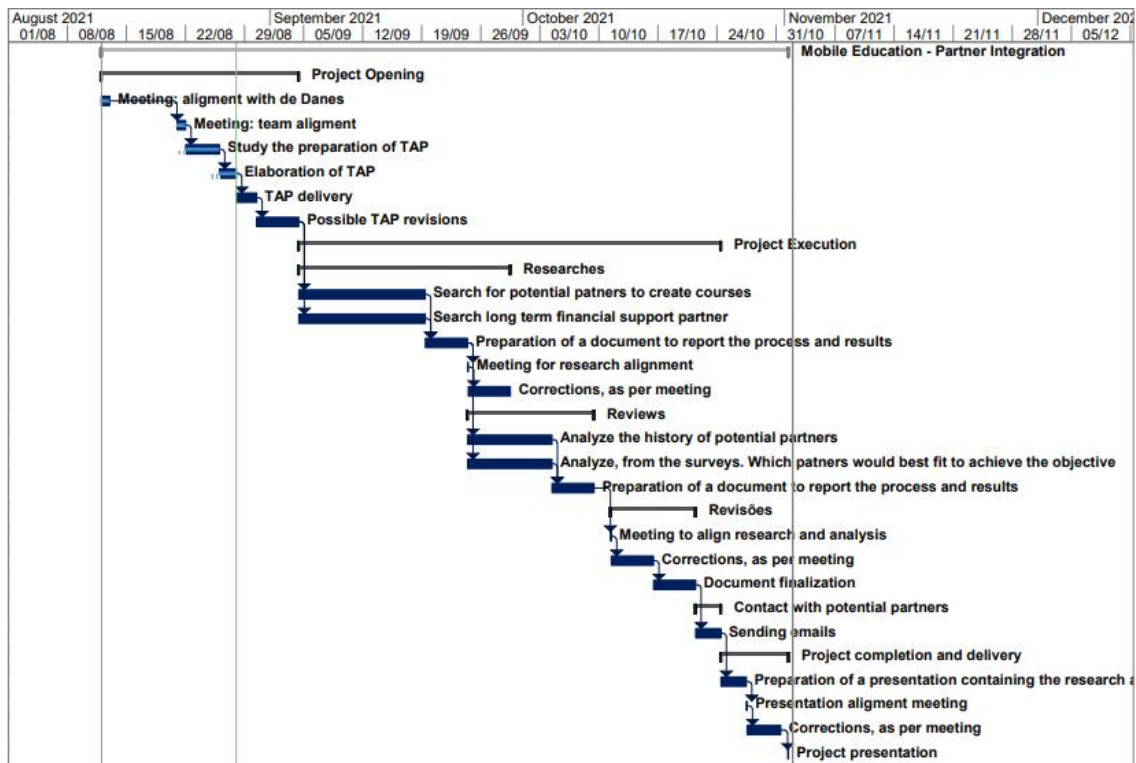
SMART's goal is to build the list of top partners for course creation and financial support by November 2021.

Thus, for this objective to be achieved, the commitment of the stakeholders for the execution and management of the project will be necessary.

4. Project Analytical Structure

i	WBS ▾	Task Name ▾
	0	▸ Mobile Education - Partner Integration
	1	▸ Project Opening
✓	1.1	Meeting: alignment with de Danes
✓	1.2	Meeting: team alignment
✓	1.3	Study the preparation of TAP
✓	1.4	Elaboration of TAP
	1.5	TAP delivery
	1.6	Possible TAP revisions
	2	▸ Project Execution
	2.1	▸ Researches
	2.1.1	Search for potential partners to create courses
	2.1.2	Search long term financial support partner
	2.1.3	Preparation of a document to report the process and results
	2.1.4	Meeting for research alignment
	2.1.5	Corrections, as per meeting
	2.2	▸ Reviews
	2.2.1	Analyze the history of potential partners
	2.2.2	Analyze, from the surveys. Which partners would best fit to achieve the objective
	2.2.3	Preparation of a document to report the process and results
	2.3	▸ Revisões
	2.3.1	Meeting to align research and analysis
	2.3.2	Corrections, as per meeting
	2.3.3	Document finalization
	2.4	▸ Contact with potential partners
	2.4.1	Sending emails
	3	▸ Project completion and delivery
	3.1	Preparation of a presentation containing the research and analysis
	3.2	Presentation alignment meeting
	3.3	Corrections, as per meeting
	3.4	Project presentation

5. Project Schedule



6. Main requirements of the main deliveries/products

The main requirements for the realization of deliveries is the monitoring and management of time and people.

7. Analysis of potential financial partners

Our financial partnership analysis will be based on four spheres, namely:

1. Analysis of companies that have financial contributions to social organizations;
2. business analysis that has financial organizations in social contributions for people of low income in BRAZIL;
3. Analysis of companies that invest in low-income adults;
4. Analysis of companies that make investments in the remote education / technology sector.

8. Milestones

The project milestones are defined based on the documentation delivered in each phase of the project and validated by psp5 and students from Aalborg University in Denmark.

9. Stakeholders

The following table lists the project stakeholders with their respective roles:

Stakeholder	Occupation
Daniel Britze Jacob Vejlin Jensen	Define, validate deliverables and assist in the progress of the project
João Mello da Silva Paulo Celso dos Reis Gomes Simone Borges Simão Monteiro Jens Myrup Pedersen Mateus Halbe Torres	Supervise, monitor and control project execution.
Bruna de Lima Bezerra Isaac Veras Lima Luca Dias Bueno	Run the project
Isaac Veras Lima	Lead the project and responsible for communication between project members and other stakeholders
Possíveis parceiros para o projeto	Validate business model and interest levels with the project partner
Equipes dos projetos de PSP5	Provide ongoing feedback to the PSP1 team and evaluate deliverables

10. Restrictions

Constraints are limitations that may compromise the development of the project and must be considered at the beginning of the project. Thus, the group perceived the following factors as design constraints.

Restriction	Description
term of the semester	All deliveries must be made by the end of the academic semester 2021.1 at Unb , November 6, 2021.
Conflicting internal schedules	The dates and times of future staff meetings should be aligned with each student's demand for other undergraduate disciplines and outside activities such as internships and personal life.
Conflicting external schedules	The dates and times of future meetings between the team and other stakeholders must be aligned with the availability of each one.
Project initiation	As this is the first contact with a project discipline of the production engineering students at the University of Brasília, one must take into account the fact that students are adapting to the tools and structure of how to make a project according to the progress of this project. project.
Companies that meet the project scope	Due to the project's objectives, organizations must be selected according to the project scope and within the number of companies established for the project, which takes contact time and resources.

11. Assumptions

Assumptions are assumptions or external factors that are taken into account when planning the project. It starts with the following assumptions that are considered true for the execution of this project:

Premise	Description
Application	The app for smartphones has already been developed and is in the testing phase before being made available to waste pickers.
Collectors	Waste pickers will be informed about the launch of the application, as well as receive support from other members of the EPIC + SDG Challenge ;
Engagement of PSP1 members in the project	PSP1 members will endeavor to ensure that all deliveries are made within the timeframe determined by this document.
Possible partner companies and organizations	Prospective partner companies and organizations are expected to maintain contact with the project team.
Engagement of other stakeholders .	The other stakeholders will actively participate in their roles for the progress of the project through meetings defined depending on demand.

12.Risks

Project risks are based on uncertain events or conditions that can have a positive or negative effect on project objectives. Below we list the possible risks associated with the project:

Risk	Description
meetings	Meetings may be subject to internet connection drop, as well as lower than desired connection performance
Language	Contacts with Danish students and project deliveries will be made in English, which entails issues involving problems with translation of documents and monitoring of meetings.
Time	Due to the demand of other activities that students have, this can lead to loss of productive capacity, less than desired due to overload in some period of time .
Contacts with partners	Contacts may be subject to delays in response, as well as lack of interest and unresponsiveness to students.

13.Project Budgets

This project will have no financial costs, it will only be necessary availability of time and material resources from students to carry out all project activities. It is estimated that 10 hours per week are required from each PSP1 team member dedicated to the project.